

SEASONZ

DISCOVER YOUR LUXURY



NEW ZEALAND

SELF DRIVE SAMPLE ITINERARY

17 DAYS

Overview

ARRIVE	DEPART	NIGHTS	DESTINATION	ACCOMMODATION	ROOM TYPE
Day 1	Day 4	3	Queenstown	Sofitel Queenstown Hotel & Spa	Luxury Room
Day 4	Day 6	2	Banks Peninsula	Annandale Villas	Shepherd's Cottage
Day 6	Day 8	2	Kaikoura	Hapuku Lodge & Tree Houses	Upper Branch Treehouse
Day 8	Day 10	2	Marlborough Sounds	Bay of Many Coves Resort	One Bedroom Apartment
Day 10	Day 12	2	Hawke's Bay	Breckenridge Lodge	Suite
Day 12	Day 15	3	Taupo	Acacia Cliffs Lodge	Lake View Suite
Day 15	Day 17	2	Waiheke Island	Boatshed Seaside Boutique Hotel	Boatshed Suite

Accommodation

Sofitel Queenstown Hotel & Spa

The luxury Sofitel Queenstown Hotel & Spa offers lavish accommodations in understated elegance, coupled with warm Queenstown hospitality. The hotel complex features fine dining and meticulous attention to detail, all in the heart of Queenstown, at one exclusive address. Stroll to the wharf, malls or Skyline attractions. After a day of adventure and discovery, return to the comfort of Sofitel's luxury boutique hotel. Unwind at the hotel's Nue Lounge, the intimate champagne lounge and library, or rekindle energies at the So Spa. The hotel's 82 elegantly appointed rooms and suites feature comforts such as a double spa bath and separate rain shower. Enjoy the modern surround sound LCD TVs that entertain in bedroom and bathroom. Plush New Zealand possum throws add another touch of luxury. The hotel's facilities include Jervois Steakhouse, Nue Lounge, Left Bank Cafe, Le Spa and five unique meeting and event venues.

Check In 14:00

Check Out 11:00



Annandale Villas

Annandale is a historic homestead anchored to the rugged edges of the South Island's, Banks Peninsula. Amble in private farmland, along kilometers of open coastline, or through the luxurious grounds surrounding the stunning property to get a real feel for countryside escapism. Switch off and log out for an authentic New Zealand experience. Each of the properties has a distinctive atmosphere, and offers privacy and relaxation. Built in the 1880's, The Annandale homestead has been carefully restored to create a luxurious five bedroom home in a private and tranquil setting. Warmly embraced on both sides by the surrounding hills and facing a private bay, Scrubby Bay is a magical and completely private setting for gatherings of up to 14 guests. Seascape is a sparkling jewel in Annandale's crown, a picturesque private bay, above which an ultra modern retreat provides a romantic experience for two. Set high on the hill with an uninterrupted view of the Pacific Ocean and Kaikoura Ranges in the distance, the charming and secluded rural retreat makes for a superb getaway location. Fresh and delicious local produce is a hallmark of a stay at Annandale. The cuisine will be an experience to savor with whichever dining option is chosen, from a private chef dinner to cuisine created and delivered directly to the villa for leisurely enjoyment.

Check In 14:00

Check Out 10:00



Hapuku Lodge & Tree Houses

Hapuku Lodge & Tree Houses was designed to be a contemporary country hotel. The majority of the furniture throughout the lodge, including the custom designed beds were also designed and handcrafted by local woodworkers. The lodge's facilities include two suites, one lodge room, the Hapuku room as well as a lap pool and sauna.

Check In 14:00

Check Out 11:00



Bay of Many Coves Resort

The Bay of Many Coves Resort is situated just a short water taxi ride away from Picton Harbour, and within easy reach of major New Zealand airports. The resort is located in the tranquil Marlborough Sounds region. The resort's contemporary apartments on the water's edge offer seclusion in a pristine natural environment. Guests can relax within the resort's luxurious facilities and beautiful surroundings.

Check In 14:00

Check Out 10:00



Breckenridge Lodge

Breckenridge Lodge is a unique architecturally designed complex. The lodge has a beautiful setting to venture outside for a walk, either through the garden or further afield. Guests can safely walk or run alongside the vineyard and past other rural properties in the area. The lodge offers guests the opportunity to relax and enjoy private, luxury lodge accommodation, nestled in the picturesque valley of Omarunui, in the sunny Hawke's Bay. Breckenridge Lodge offers a peaceful location as well as gourmet food and wine.

Check In 15:00

Check Out 10:00



Acacia Cliffs Lodge

Opened in April 2008, Acacia Cliffs Lodge is a unique boutique lodge offering luxury accommodation in stunning Lake Taupo. Architecturally designed to maximize the spectacular lake and mountain views, the luxury lodge offers uninterrupted views of Lake Taupo, Mount Tauhara and the Kaimanawa Ranges. Enjoy a New Zealand honeymoon, indulge in a romantic holiday, experience relaxed luxury and superb New Zealand cuisine or join friends and family in an exclusive use of the lodge. There is a wonderful sense of seclusion and privacy at Acacia Cliffs Lodge, while Taupo's town center and the volcanic Central Plateau's many attractions are virtually minutes away. The boutique accommodation Acacia Cliffs Lodge is the ideal base from which to explore everything Taupo has to offer. The choices are endless, enjoy a spectacular scenic flight over Lake Taupo and nearby active volcanoes, trout fly fishing with a professional guide, golf at the latest signature course or Wairakei International Golf Course, a day's hiking on the world heritage Tongariro Alpine Crossing and so much more.

Check In 14:00

Check Out 11:00

We highly recommend enjoying dinner at Acacia Cliffs. This must be pre booked. Please note this is not available on Sunday or Wednesday.

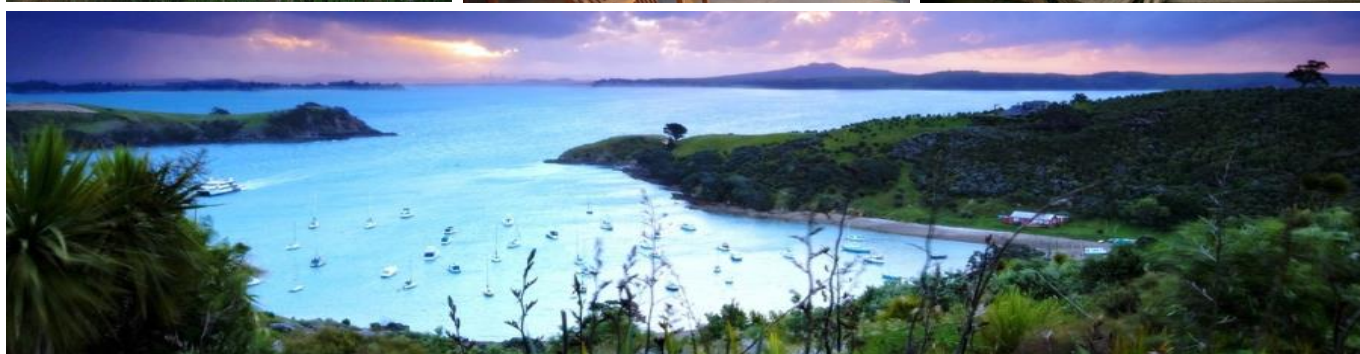


Boatshed Seaside Boutique Hotel

Inspired by the early 1900 boat sheds that are visible along the country's shores, the Boatshed Seaside Boutique Hotel is situated on a sun drenched bay on the island of Waiheke, off the coast of Auckland. Featuring five designer suites, two villas and a salt inspired spa, all with spectacular views of the ocean, the hotel offers guests the opportunity to rediscover simple pleasures. Guests can take a stroll along the vineyards, restaurants, artist studios and galleries or along the golden, sandy beaches. Dining at the hotel is a relaxed affair, where guests can enjoy a Mediterranean feast or a private seafood platter on the balcony.

Check In 14:00

Check Out 12:00



Day 1

Arrive Auckland, New Zealand

Airport Meet & Greet

Private Vehicle Transfer to Auckland Airport Domestic Terminal

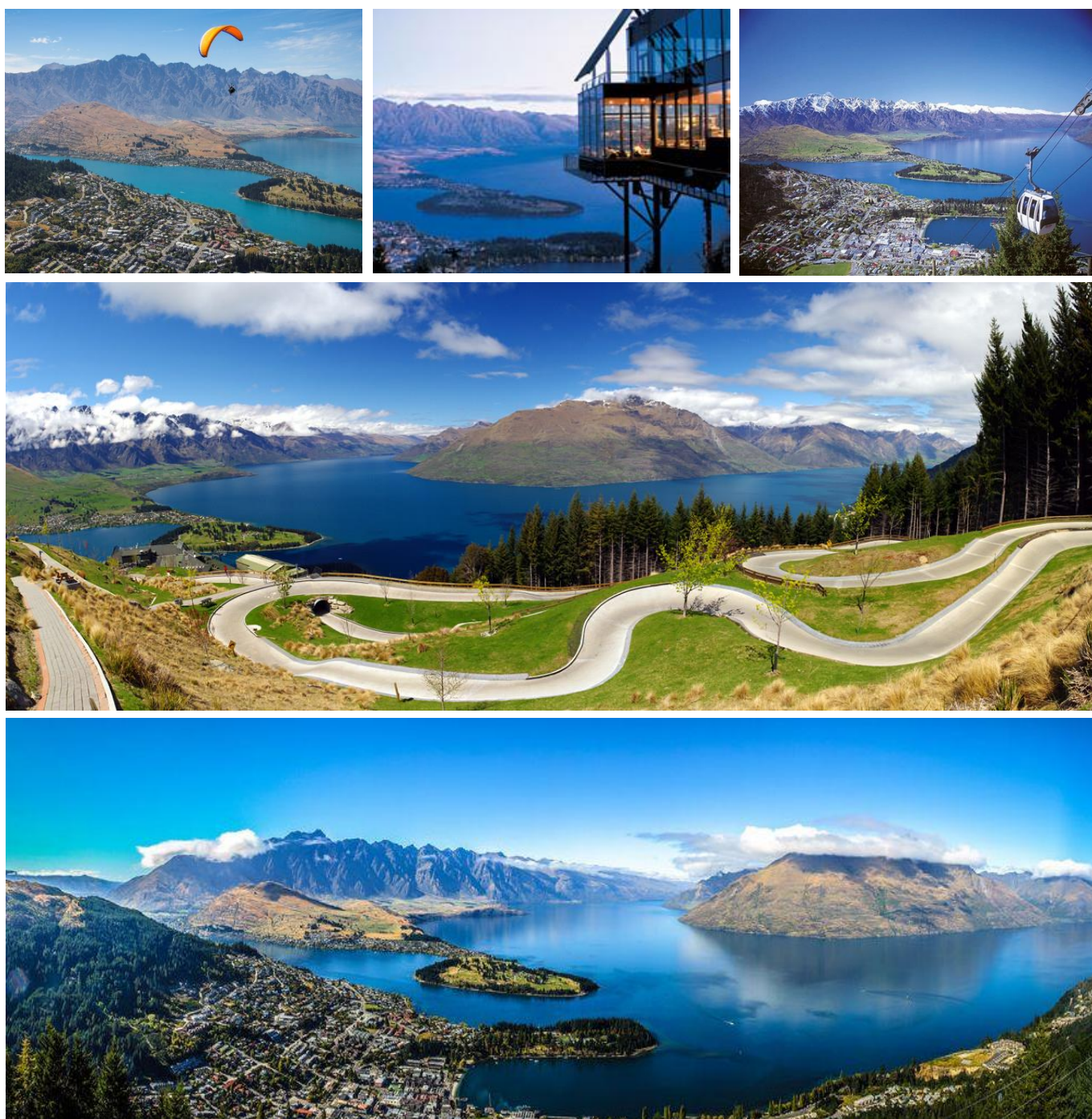
Scheduled flight from Auckland Airport Domestic Terminal [AKL] to Queenstown Airport [ZQN]

Collect Rental Vehicle and Self Drive to Sofitel Hotel *20 Mins

Afternoon at Leisure. We recommend the following optional activities:

- The Skyline Complex
- Kiwi & Birdlife Park

Overnight Sofitel Queenstown Hotel & Spa: Breakfast



Day 2

Vehicle Transfer to Queenstown Airport
Milford Sound Helicopter Excursion with Glacier Landing

The icon of Mitre Peak beckons you as your helicopter lifts off to begin your journey into Milford Sound. Get up and close with some of the most spectacular mountains and glaciers in the Southern Alps before landing at Milford. Experience the Sound up close and personal with great photo opportunities of Mitre Peak and the Bowen falls. Upon departing Milford via the Harrison Valley take in the beautiful blue green icefalls, true rivers of ice, as we land you exclusively upon Ngapunatoru Plateau of Mt Tutoko. Return via isolated valleys with impressive views to make this special trip truly memorable. *Please dress warmly and wear comfortable walking shoes. Bring sunglasses, sunhat and sunscreen.

Vehicle Transfer to Sofitel Hotel
Afternoon at Leisure. We recommend the following optional activities:

- Personalised Winery Excursion in the Southern Lakes Region
- Lunch at Akarua

Overnight Sofitel Queenstown Hotel & Spa: Breakfast



Day 3

Day at Leisure. We recommend the following optional activities:

- Queenstown Guided Buggy Expedition
- Shotover Jet
- Kawarau Bridge Bungy & Zipride
- Full Day Routeburn Valley Canyoning
- Full Day Guided Hike on the Routeburn Track incl. Picnic Lunch
- Dart River Jet Boat Wilderness Excursion
- Historic Arrowtown
- Cycling and Sightseeing in the Queenstown Region
- Queenstown Tandem Skydiving

Overnight Sofitel Queenstown Hotel & Spa: Breakfast



Day 4

Self Drive to Queenstown Airport and Return Rental Vehicle *20 Mins

Scheduled flight from Queenstown Airport [ZQN] to Christchurch International Airport [CHC]

Collect Rental Vehicle and Self Drive to Annandale *1 Hour 25 Mins

Afternoon at Leisure. We recommend the following optional activity:

- Hiking and Mountain Biking at Annandale

Overnight Annandale Villas: We Create You Serve Breakfast and Chef Prepared Dinner



Day 5

Day at Leisure. We recommend the following optional activities:

- Nature Cruise in Pigeon Bay
- Annandale Kayaks
- Annandale's Cooking Class
- Farm Experience at Annandale
- Clay Target Shooting at Annandale
- Art in your Villa

Overnight Annandale Villas : We Create Your Serve Breakfast and Chef Prepared Dinner



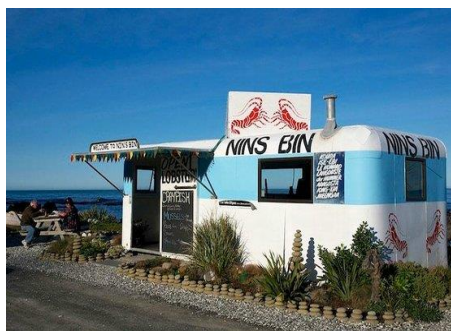
Day 6

Self Drive to Hapuku Lodge *4 Hours 30 Mins

Afternoon at Leisure. We recommend the following optional activity:

- Visit "Nins Bin"

Overnight Hapuku Lodge & Tree Houses: Breakfast and Dinner



Day 7

Self Drive to The Whaleway Station *10 Mins

Whale Watching Cruise in Kaikoura

Today enjoy an unforgettable Whale Watch Excursion. Enjoy a 2.5 hour cruise to view Orca and Sperm whales. The sight of one of these great creatures lifting themselves up from the sea, crashing down again with a graceful flip of their massive tails will be truly memorable. This region is a playground to whales all year round due to the nutrient rich waters. You may also see fur seals, tiny Hector dolphins and a wide variety of offshore birds – if you are lucky you may see an Albatross. *Please remember to take your Seasonz voucher with you.

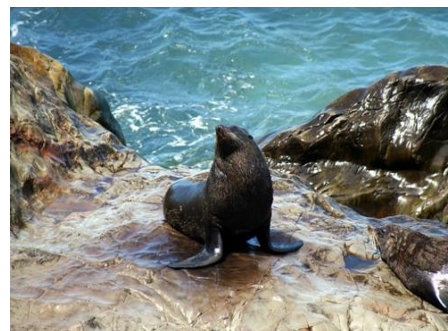
We recommend you dress warmly and wear flat shoes. You may also like to bring a light waterproof jacket.

Self Drive to Hapuku Lodge

Afternoon at Leisure. We recommend the following optional activity:

- Snorkelling with Seals

Overnight Hapuku Lodge & Tree Houses: Breakfast and Dinner



Day 8

Self Drive to Picton Ferry Terminal and Return Rental Vehicle *2 Hours 30 Mins Via Coastal Route or 6 Hours 45 Mins Via Inland Route

Scheduled Water Taxi Transfer to Bay of Many Coves *45 Mins

Afternoon at Leisure. We recommend the following optional activities:

- Bay of Many Coves Spa Treatment
- Bay of Many Coves Walking Tracks
- Bay of Many Coves Kayaks

Overnight Bay of Many Coves Resort: Breakfast



Day 9

Day at Leisure. We recommend the following optional activities:

- Motuara Island
- Marlborough Sounds Greenshell Mussel Cruise
- Guided Hike on the Queen Charlotte Track
- Bay of Many Coves Glowworms
- Private Sail Boat Charter through the Marlborough Sounds
- Bay of Many Coves Mountain Bike Adventure
- Bay of Many Coves Swimming
- Walk to Waterfall in Marlborough Sounds

Overnight Bay of Many Coves Resort: Breakfast



Day 10

Scheduled Water Taxi Transfer to Picton Ferry Terminal *45 Mins

Private Vehicle Transfer to Blenheim Airport *35 Mins

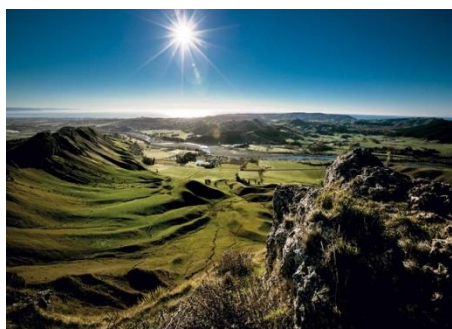
Scheduled flight from Marlborough Airport [BHE] to Hawke's Bay Airport [NPE]

Collect Rental Vehicle and Self Drive to Breckenridge Lodge *15 Mins

Afternoon at Leisure. We recommend the following optional activities:

- Cooking Class at Breckenridge Lodge
- A Round of Golf at Cape Kidnappers

Overnight Breckenridge Lodge: Breakfast



Day 11

Winery Tour by Bike in the Hawke's Bay incl. Lunch at Elephant Hill Winery Restaurant

Your cycle starts at the boutique winery of Black Barn in Havelock North where you have the opportunity to taste their wines. You can also visit the vineyard's 'We Love Local' gourmet food store and view the amphitheatre and market site which makes Black Barn unique. A short ride will then take you to Te Mata Estate winery before continuing to Origin Earth to taste some of their excellent, artisan cheeses. It is then time to join the Landscapes Trail for a scenic, off road cycle to the coast through stunning orchard country, also passing by vineyards, olive groves, horse studs and farmland - all on flat terrain with wonderful vistas. On arrival in the coastal village of Haumoana enjoy lunch at the acclaimed Elephant Hill Winery Restaurant before a final tasting at Clearview Estate. *Please pay direct for lunch. *Please bring your camera, hat, sunglasses, wind jacket, comfortable clothes and sturdy footwear.

Overnight Breckenridge Lodge: Breakfast



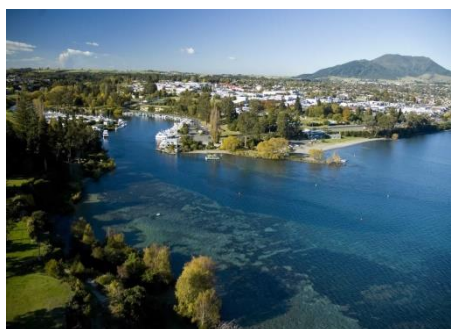
Day 12

Self Drive to Acacia Cliffs Lodge *2 Hours 10 Mins

Afternoon at Leisure. We recommend the following optional activities:

- Huka Falls
- Guided Hike in Taupo

Overnight Acacia Cliffs Lodge: Breakfast



Day 13

Half Day Fly-Fishing in Taupo

Your experienced and very keen guide will take you to a remote backcountry stream. Your guide will share his knowledge of the stream pool by pool as you cast to rainbow and brown trout in crystal clear pools. *Your guide will provide all fishing gear including waders however you may also wish to take a lightweight raincoat, long socks, t-shirt, fleece / thermal under-clothing, polarised sunglasses, a hat, a camera and insect repellent.

Afternoon at Leisure. We recommend the following optional activities:

- Taupo Kayaking
- Golf at The Kinloch Club

Overnight Acacia Cliffs Lodge: Breakfast



Day 14

Day at Leisure. We recommend the following optional activities:

- White Island & Mt Tarawera Volcanic Helicopter Safari
- Guided Hike to Tarawera Falls
- Luxury Boat Cruise on Lake Rotoiti
- Private Maori Encounter
- Geothermal Areas of the Rotorua Region
- Rotorua Adventure Day incl. White Water Rafting, Maori Encounter and Mountain Biking
- Rotorua Sightseeing and Mountain Biking Excursion incl. Lunch

Overnight Acacia Cliffs Lodge: Breakfast



Day 15

Self Drive to Taupo Airport and Return Rental Vehicle *25 Mins

Scheduled flight from Taupo Airport [TUO] to Auckland Airport Domestic Terminal [AKL]

Private Vehicle Transfer to Auckland Ferry Terminal *45 Mins

Scheduled Ferry Transfer to Waiheke Island *40 Mins

Complimentary Vehicle Transfer to The Boatshed *10 Mins

Afternoon at Leisure. We recommend the following optional activities:

- Waiheke Island Beaches
- Waiheke Island Hikes

Overnight Boatshed Seaside Boutique Hotel: Breakfast



Day 16

Waiheke Island Wine and Art Tour

Known as the jewel of Auckland's Hauraki Gulf for its beauty and tranquility, Waiheke Island offers award-winning wines, olive oils, plump oysters straight from the sea, hand-made specialty foods and many delightful cafés and restaurants. A 'small is beautiful' philosophy yields low quantities of extremely high quality fruit for amazing wines. Today your knowledgeable local guide will take you to some of the Island's highly regarded vineyards, where you can taste their fine wines and learn about this unique region. There are also artist's studios to explore, sculpture gardens, a scenic coastal walk, a beach excursion or an exciting zipline ride over lush native bush! The day will be designed to suit your interests.

Overnight Boatshed Seaside Boutique Hotel: Breakfast



Day 17

Complimentary Vehicle Transfer to Waiheke Island Ferry Terminal *10 Mins
Scheduled Ferry Transfer to Auckland *40 Mins
Private Vehicle Transfer to Auckland Airport International Terminal *45 Mins
Depart Auckland, New Zealand

